



# Model Nordique



Outside, straight lines with Scandinavian accents. Inside, a warm and welcoming layout. That's what Nordique has to offer. The 1,376 sq. ft. of living space include a unifying kitchen with a possible walk-in pantry or a laundry room on the ground floor. Lastly, the bathroom is generously equipped with a ceramic tile shower and a freestanding tub. You'll be sold on your first visit!

---

Semi-detached house - Contemporary style

---

2 or 3 rooms • 1 + 1 bathrooms • living room

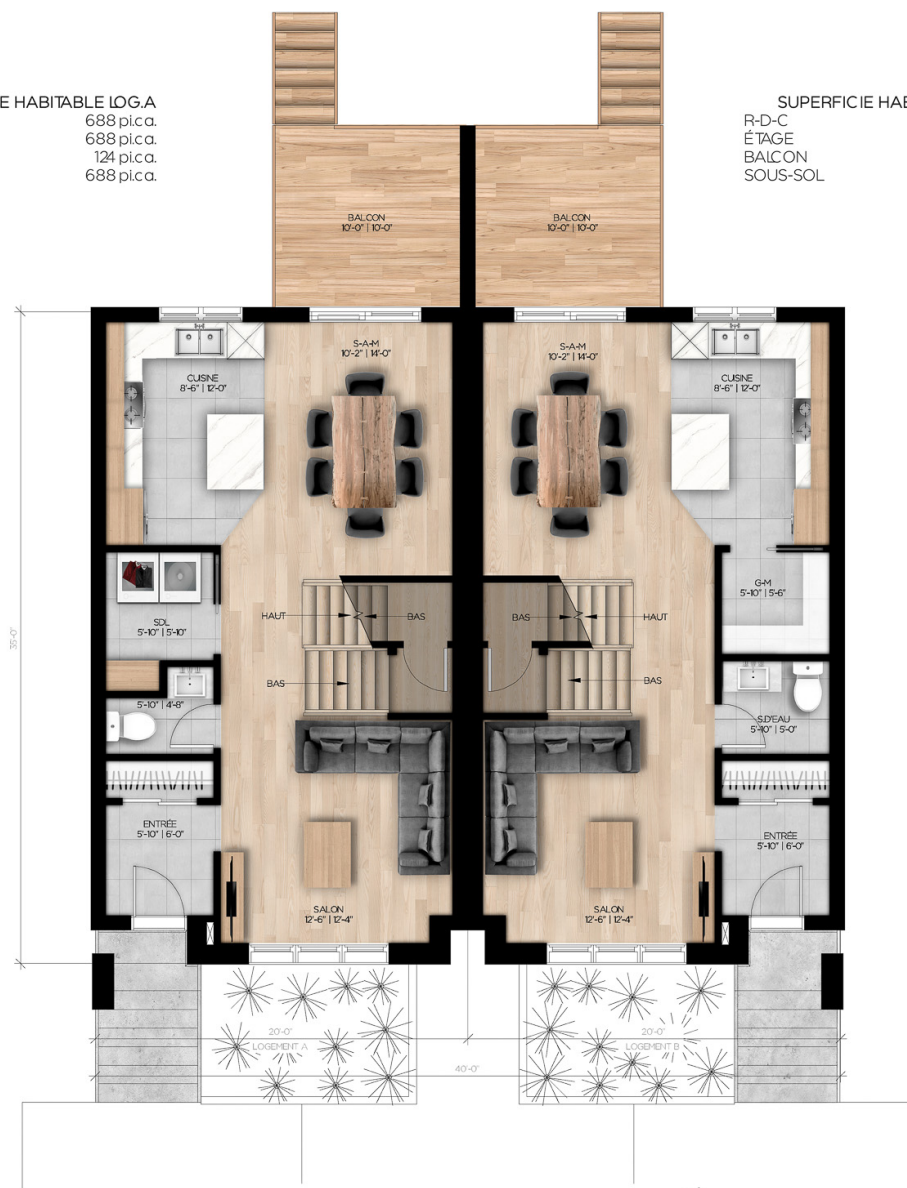
---

Ground floor	688 ft <sup>2</sup>
Second floor	688 ft <sup>2</sup>

---

SUPERFICIE HABITABLE LOG.A  
R-D-C 688 p.c.a.  
ÉTAGE 688 p.c.a.  
BALCON 124 p.c.a.  
SOUS-SOL 688 p.c.a.

SUPERFICIE HABITABLE LOG.B  
R-D-C 688 p.c.a.  
ÉTAGE 688 p.c.a.  
BALCON 124 p.c.a.  
SOUS-SOL 688 p.c.a.

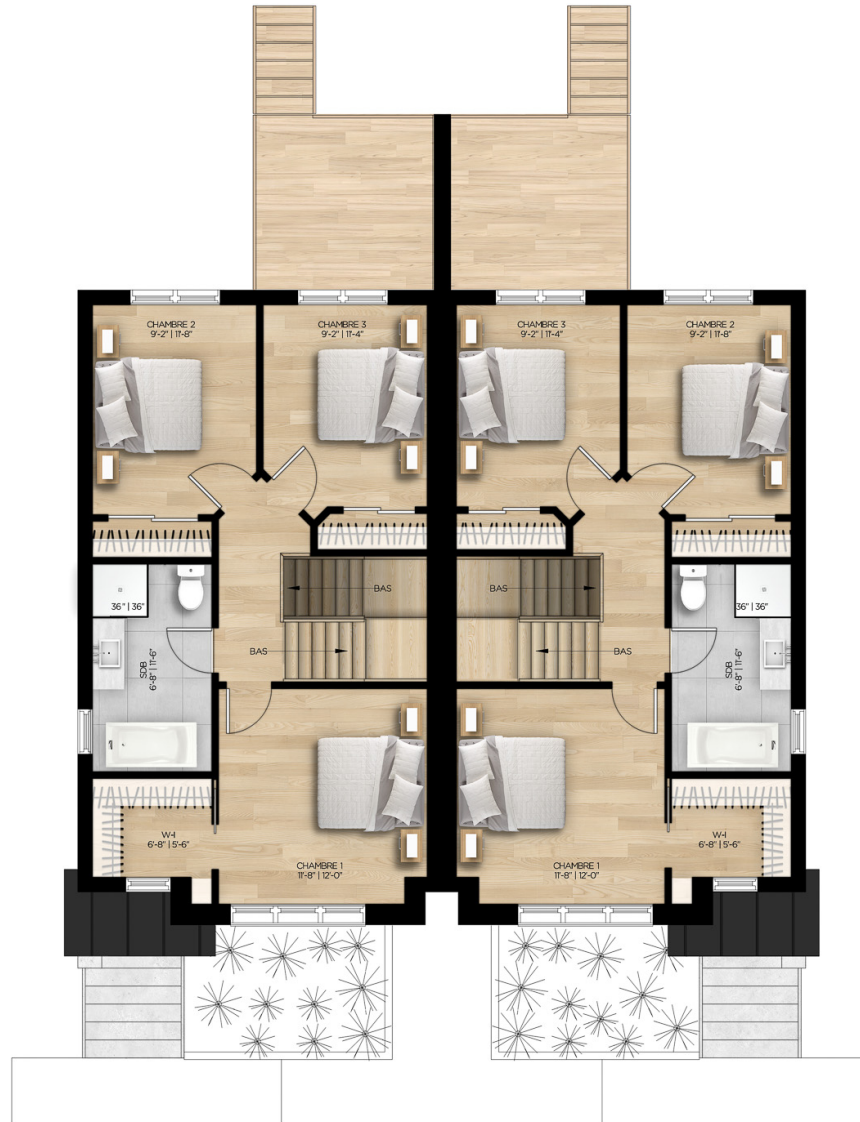


## REZ-DE-CHAUSSÉE





## ÉTAGE OPTION 2 CHAMBRES



## ÉTAGE OPTION 3 CHAMBRES